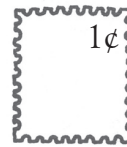





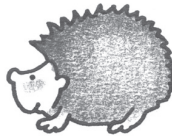
Real-life problems



Draw the stamps on the letters.
You can use any stamp more than once.

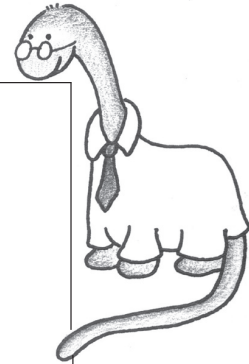




Ms. Heather Hedgehog
1 The Leaf Pile
Snowdrop Corner
Garden City



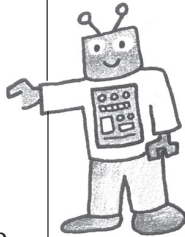
12¢

Doctor Dilly Dinosaur
6 The Swamp
Mud Town



20¢

Rachel Robot
999 Mechanical Mansion
Metalville



24¢

Cheeky Charlie Chimp
100 Banana Court
Giggleton
Apeland



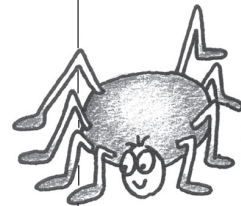
18¢

Mr. Bertie Bear
The Toy Box
Betty's Bedroom
The Big House



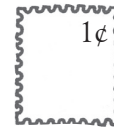
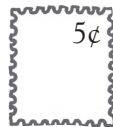
11¢

Samuel Spider
Wonder Web
Grandpa's Greenhouse
South Central Garden

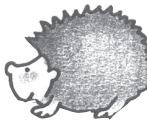


25¢

Real-life problems



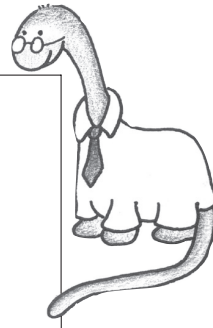
Draw the stamps on the letters.
You can use any stamp more than once.



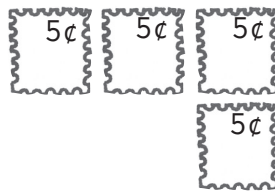
Ms. Heather Hedgehog
1 The Leaf Pile
Snowdrop Corner
Garden City



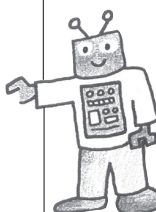
12¢



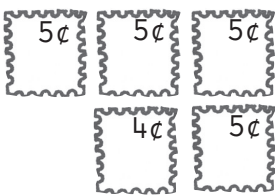
Doctor Dilly Dinosaur
6 The Swamp
Mud Town




20¢



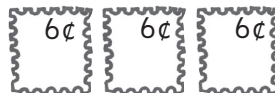
Rachel Robot
999 Mechanical Mansion
Metalville




24¢



Cheeky Charlie Chimp
100 Banana Court
Giggleton
Apeland



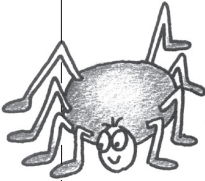
18¢



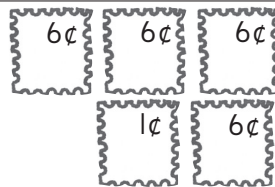
Mr. Bertie Bear
The Toy Box
Betty's Bedroom
The Big House



11¢



Samuel Spider
Wonder Web
Grandpa's Greenhouse
South Central Garden



25¢

Children may use different stamp combinations to reach the totals. In real-life situations, most people would use as few stamps as possible. For 6¢ postage, a 5¢ stamp and a 1¢ stamp would be better than six 1¢ stamps.