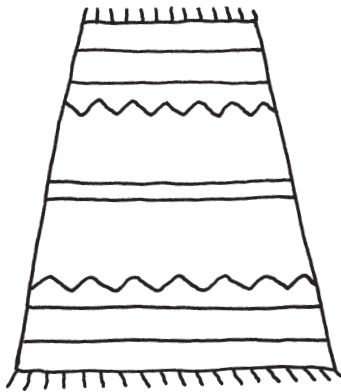
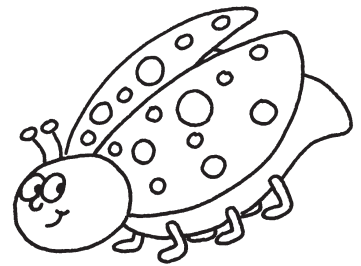
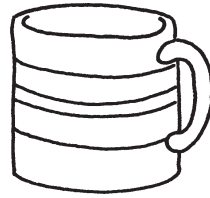
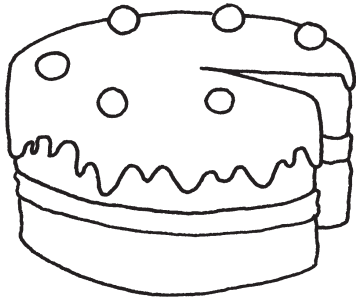


Match the rhymes



Draw lines connecting the **jug** to the things that **rhyme** with it.

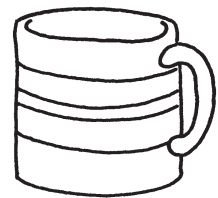


Copy these words by connecting the dots.

jug



mug



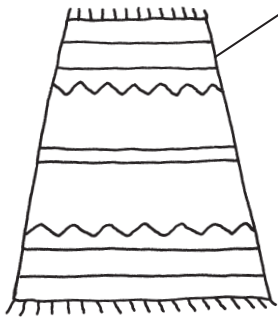
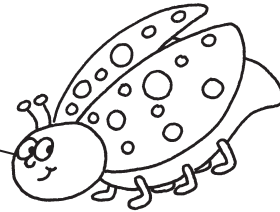
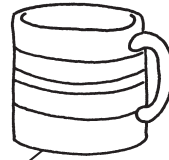
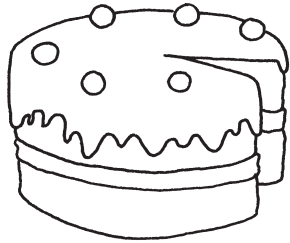
jug

mug

Match the rhymes



Draw lines connecting the **jug** to the things that **rhyme** with it.

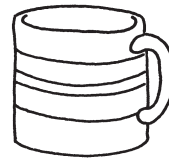


Copy these words by connecting the dots.

jug



mug



jug

mug

These activities are based on the vowel *u* and feature examples of several word families. Ask your child to find all the pictures that rhyme with the one in the center of the page and draw connecting lines and encourage handwriting practice.