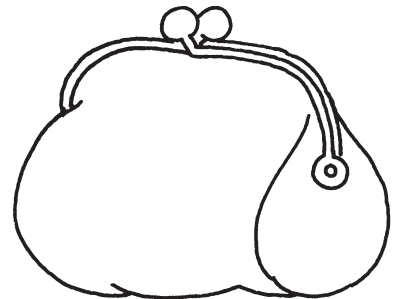
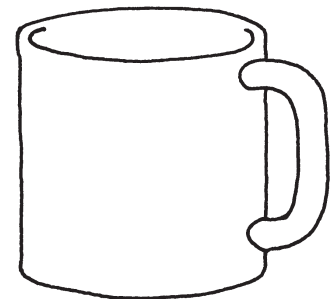
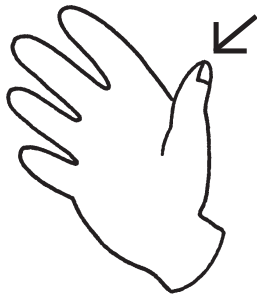
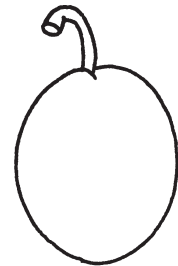
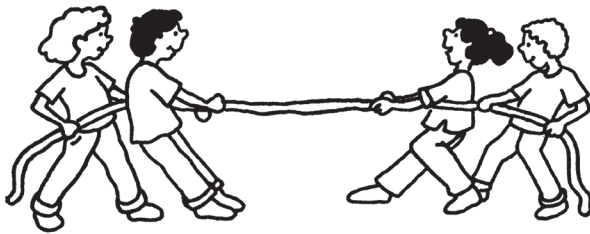


Connect the rhymes



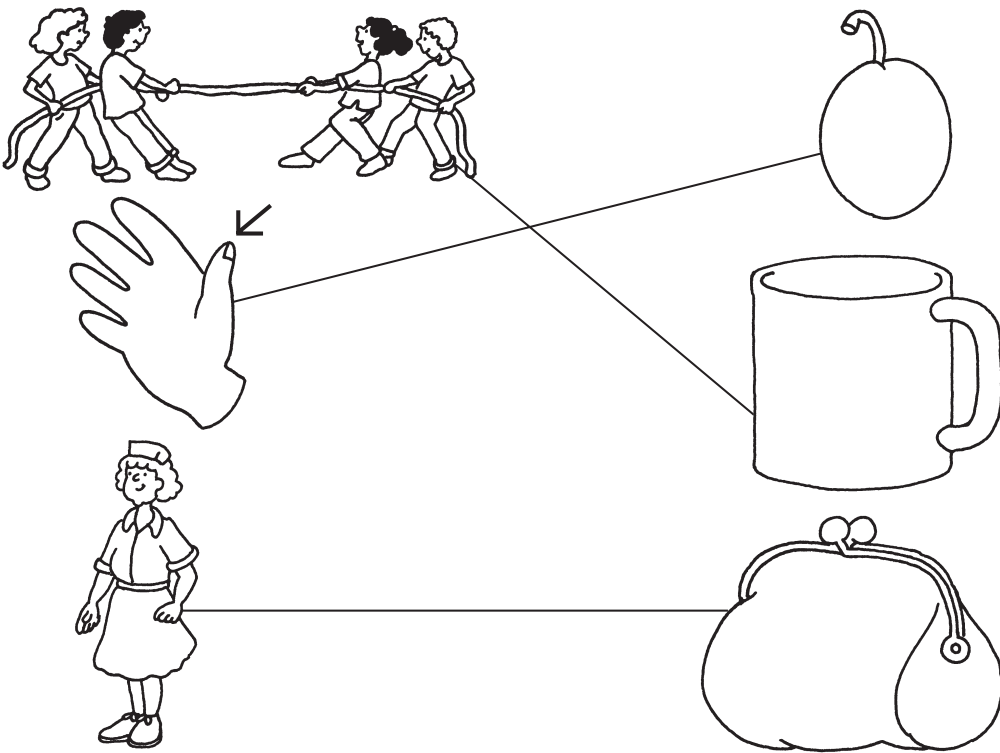
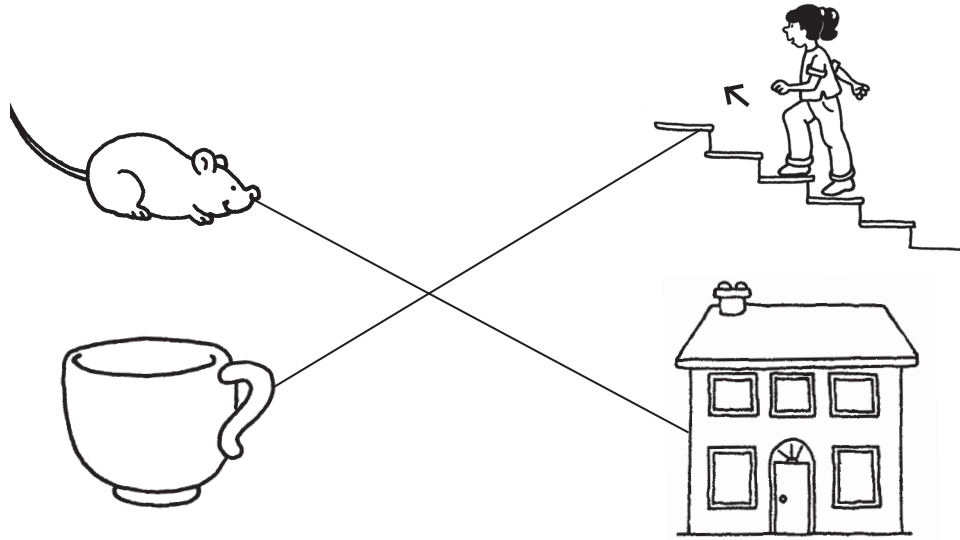
Draw a line connecting each picture to the one that **rhymes** with it.



Connect the rhymes



Draw a line connecting each picture to the one that **rhymes** with it.



These activities are based mainly on the vowel *u* and feature examples of several word families. Ask your child to match the pictures on the left with those that rhyme on the right by drawing connecting lines.