



Real-life problems

In a class of 30 children, 6 children are painting.
What percent of children are painting?

$\frac{6}{30}$ of the children are painting
and to change a fraction to
a percent we multiply by 100.

20%

$$\frac{6}{30} \times 100 = 20$$

40% of a class is made up of girls. If there are
12 girls, how many children are in the class?

If 12 girls are 40% of the class, we
divide 12 by 40 to find 1%. Then
we multiply by 100 to find 100%.

30 children

$$\frac{12}{40} \times 100 = 30$$

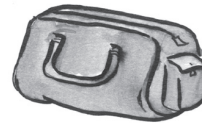
A shop has 60 books by a new author. If the
shop sells 45 books, what percent does it sell?



A school disco sells 65% of its tickets. If it had
120 tickets to start with, how many has it sold?



200 people go on a school trip. If 14% are
adults, how many children go on the trip?



A shop sells 150 T-shirts but 12 are returned
because they are faulty. What percent of
the T-shirts was faulty?



A group of 120 children are asked their
favorite colors.

15% like red. How many children like red?

20% like green. How many children like green?

30% like yellow. How many children like yellow?

35% like blue. How many children like blue?



Real-life problems

In a class of 30 children, 6 children are painting.
What percent of children are painting?

$\frac{6}{30}$ of the children are painting
and to change a fraction to
a percent we multiply by 100.

20%

$$\frac{6}{30} \times 100 = 20$$

40% of a class is made up of girls. If there are
12 girls, how many children are in the class?

If 12 girls are 40% of the class, we
divide 12 by 40 to find 1%. Then
we multiply by 100 to find 100%.

30 children

$$\frac{12}{40} \times 100 = 30$$

A shop has 60 books by a new author. If the
shop sells 45 books, what percent does it sell?

75%



$$\frac{45}{60} \times 100 = 75$$

A school disco sells 65% of its tickets. If it had
120 tickets to start with, how many has it sold?

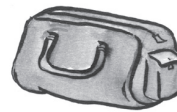
78 tickets



$$\frac{120}{100} \times 65 = 78$$

200 people go on a school trip. If 14% are
adults, how many children go on the trip?

172 children



$$100 - 14 = 86\%$$
$$\frac{200}{100} \times 86 = 172$$

A shop sells 150 T-shirts but 12 are returned
because they are faulty. What percent of
the T-shirts was faulty?

8%



$$\frac{12}{150} \times 100 = 8$$

A group of 120 children are asked their
favorite colors.

15% like red. How many children like red?

18

20% like green. How many children like green?

24

30% like yellow. How many children like yellow?

36

35% like blue. How many children like blue?

42

$$\frac{120}{100} \times 15 = 18$$

$$\frac{120}{100} \times 20 = 24$$

$$\frac{120}{100} \times 30 = 36$$

$$\frac{120}{100} \times 35 = 42$$

In questions 1 and 4, children should see that the answer can be expressed as a fraction, which can then be converted to a percentage by multiplying by 100.