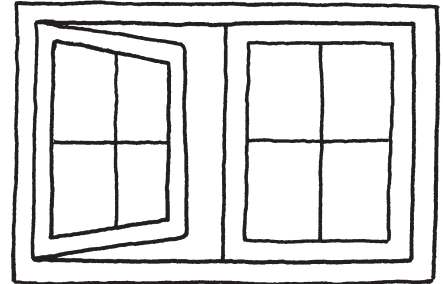
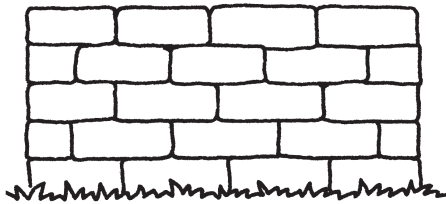
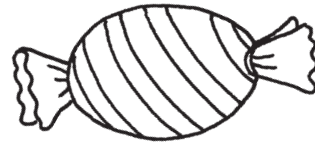
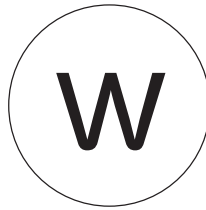
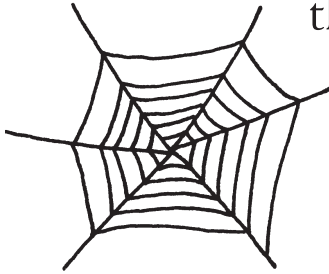


W



W w

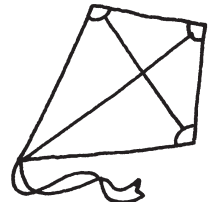
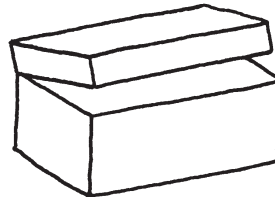
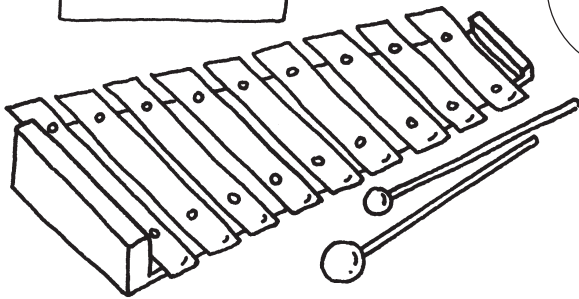
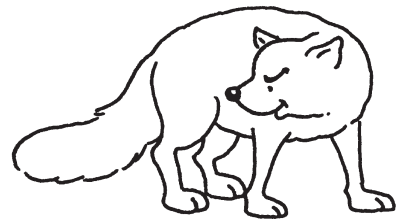
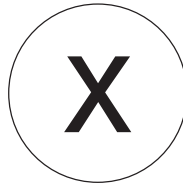
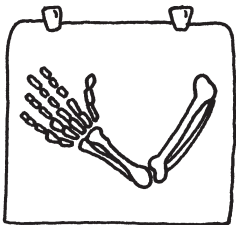
Draw lines connecting the sound in the middle to the pictures that **begin** with the same sound.



X

X x

Draw lines connecting the sound in the middle to the pictures that **include** the same sound.



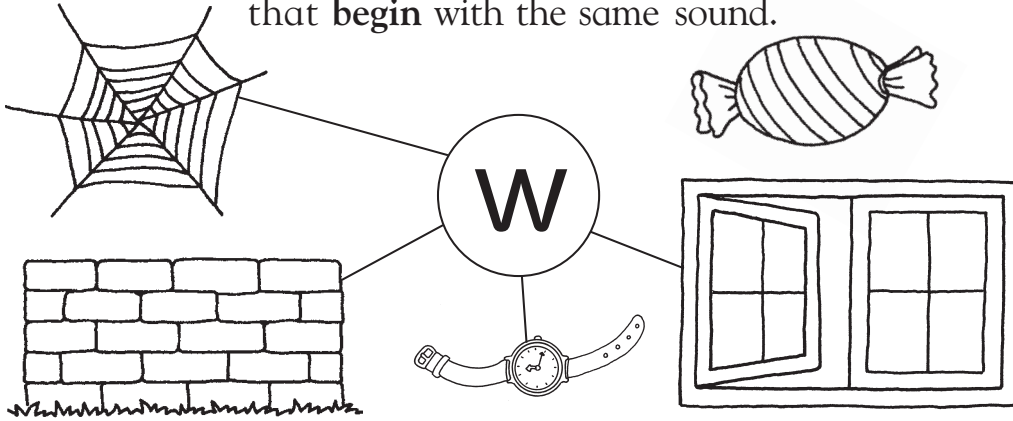
abcdefghijklmnopqrstuv _ _ yz

W



W W W W W W W

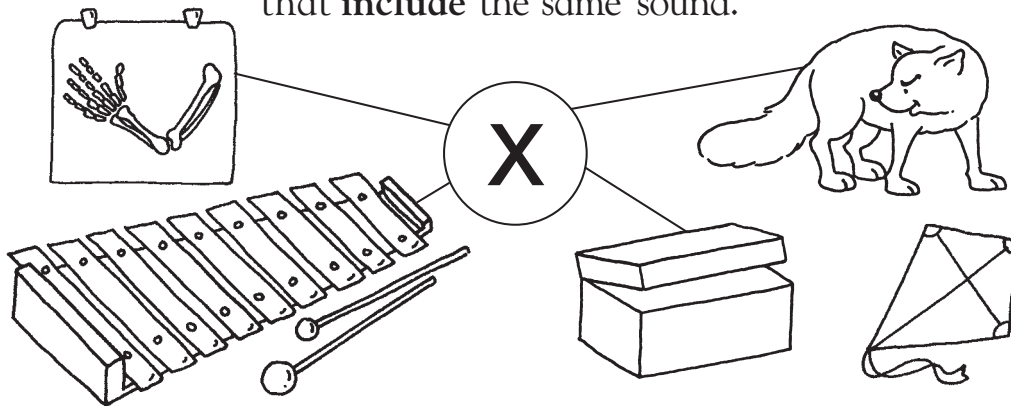
Draw lines connecting the sound in the middle to the pictures that **begin** with the same sound.



X

X X X X X X X X X X

Draw lines connecting the sound in the middle to the pictures that **include** the same sound.



abcdefghijklmnopqrstuv w x yz

These activities introduce the letters *w* and *x*. First, name each new letter and its sound. Next, ask your child to practice writing the lowercase letter by first tracing over the dots and then copying the letter several times. For the next exercise, say together the name of each picture. Ask your child to draw a line to connect the featured letter with the pictures that begin with the same first letter sound. This page features the letter *x*, which does not occur very often as a first letter. In this exercise, your child connects the letter with those pictures that have the *x* sound somewhere in the word – not just at the beginning. Finally, he or she completes the letters of the alphabet at the bottom of the page by filling in the missing letters.