



Animals must fit in

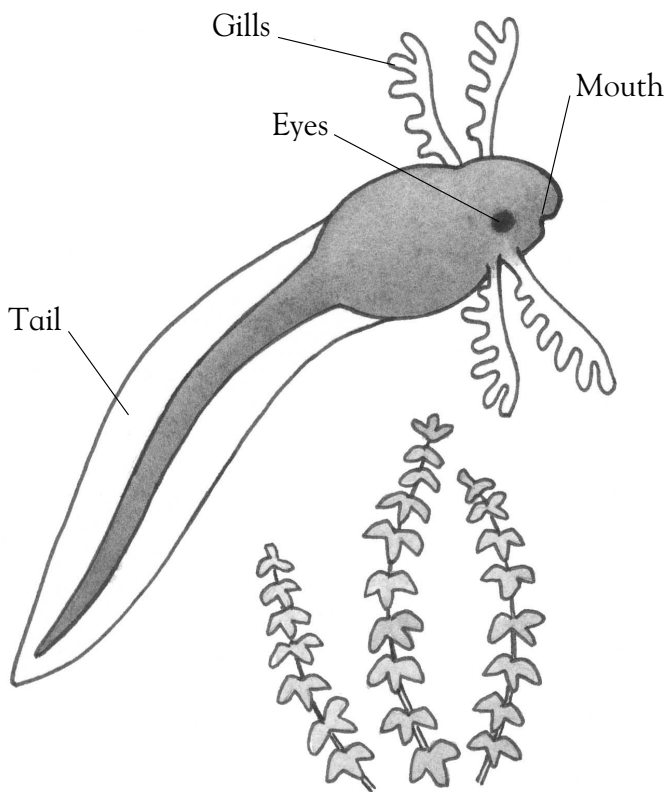
Background knowledge

Animals live in many different habitats. Each animal's body is adapted to live in a certain habitat. For example, birds that live in water have webbed feet. Mammals breathe the air with lungs, while fish have gills for breathing under water. A mole has spade-like feet to help it dig through soil. All these special features are *adaptations* animals have that help them survive in their environment.

Science activity

Tadpoles are pond animals that hatch from eggs laid by frogs in the spring. Three parts of a tadpole's body are named below. In the spaces provided, write down how you think each part helps the tadpole to live in a pond.

Part of the body	How it helps the tadpole to live in a pond
Gills
Tail
Eyes



Science investigation

! Take extra care - ask an adult to supervise you.

Brine shrimp are related to shrimp and can easily be hatched. Their eggs can be purchased at a pet store. Hatch some brine shrimp and with the help of a magnifying glass, describe how they are adapted to their environment.



Animals must fit in

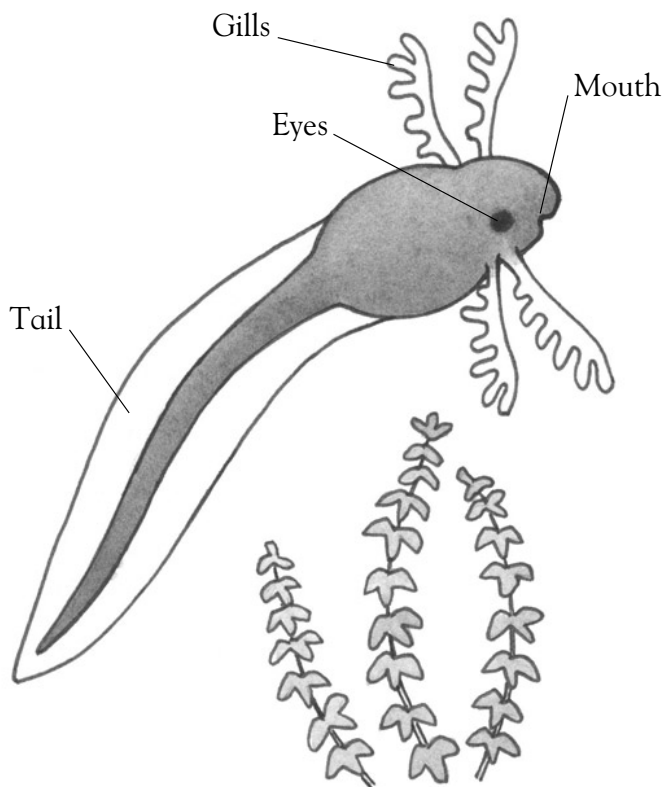
Background knowledge

Animals live in many different habitats. Each animal's body is adapted to live in a certain habitat. For example, birds that live in water have webbed feet. Mammals breathe the air with lungs, while fish have gills for breathing under water. A mole has spade-like feet to help it dig through soil. All these special features are *adaptations* animals have that help them survive in their environment.

Science activity

Tadpoles are pond animals that hatch from eggs laid by frogs in the spring. Three parts of a tadpole's body are named below. In the spaces provided, write down how you think each part helps the tadpole to live in a pond.

Part of the body	How it helps the tadpole to live in a pond
Gills	The gills help the tadpole to breathe under water.
Tail	The tail helps the tadpole to swim.
Eyes	The eyes help the tadpole to find its food.



Science investigation

⚠ Review how certain body features help an animal survive in its environment. Brine shrimp are constantly moving because they are filter feeders. They have 11 pairs of appendages that sweep food into their mouth. They are adapted to living in very salty water.